

CONSTRUCTION OF A BREAKWATER TO PROTECT THE ASPRA VILLAGE, BAGHERIA, PALERMO, ITALY

CLIENT: MUNICIPALITY OF BAGHERIA

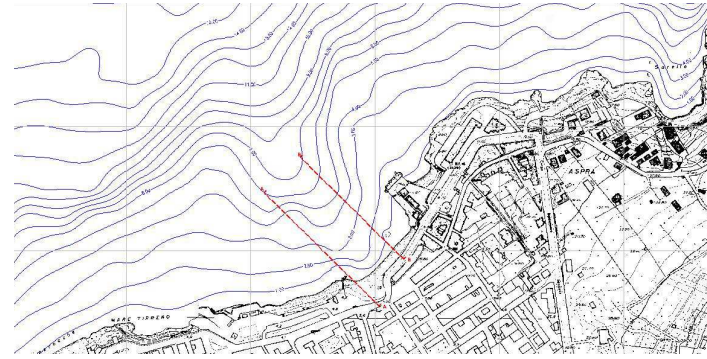
LOCATION: Aspra, Bagheria, Palermo, Italy

YEAR: 2003-2009

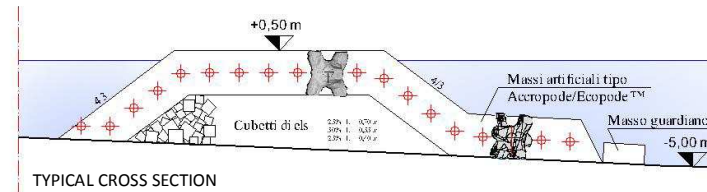
BUDGET: € 1,820,000

PROVIDED SERVICES:

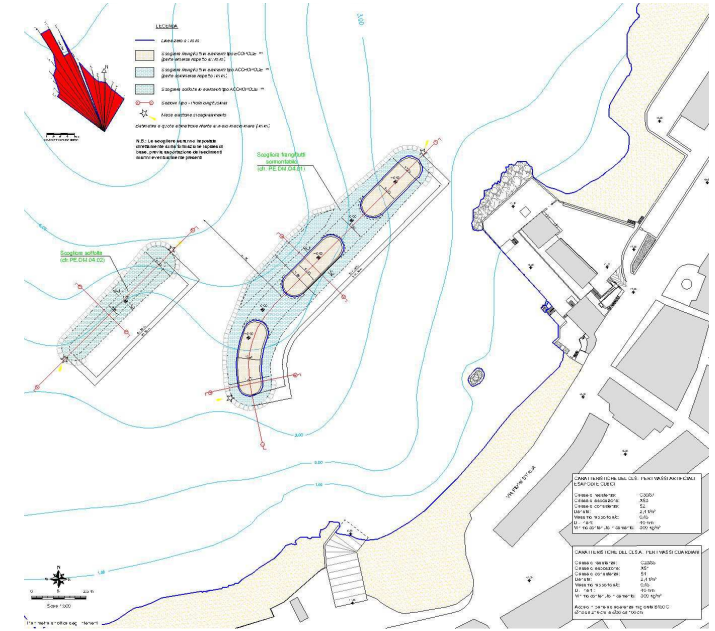
- preliminary, final and construction level design
- supervision of construction works



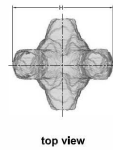
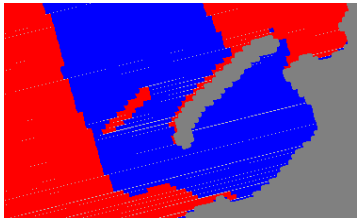
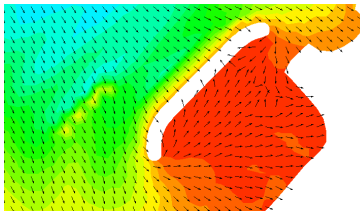
CURRENT LAYOUT



TYPICAL CROSS SECTION



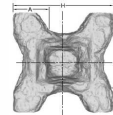
PROJECT LAYOUT



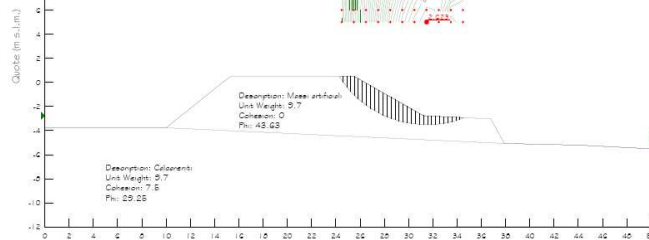
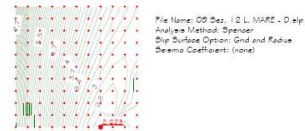
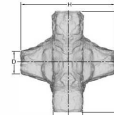
top view



side view



front view



STRUCTURAL AND GEOTECHNICAL STUDIES



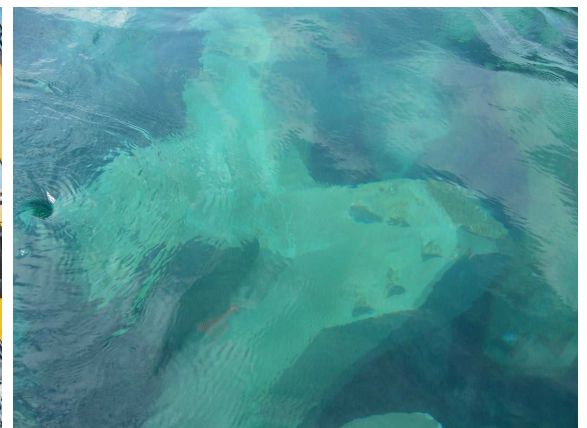
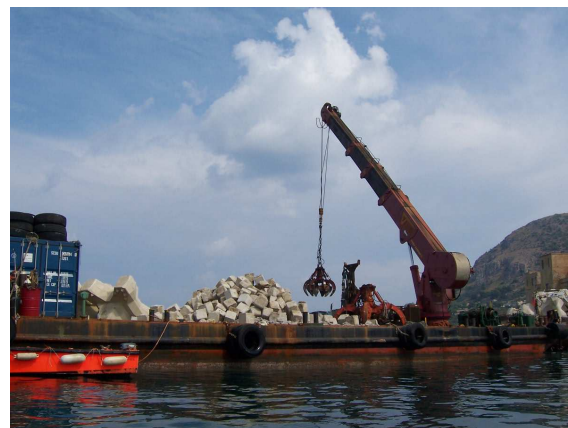
EXPERIMENTAL INVESTIGATION BY PHYSICAL MODEL



PRODUCTION OF CONCRETE CUBIC BLOKS



PRODUCTION OF CONCRETE HEXAPOD



CONSTRUCTION