

# PORTO DEI NEBRODI, SANT'AGATA DI MILITELLO, MESSINA, ITALY

CLIENT: Porto dei Nebrodi s.r.l.

LOCATION: Sant'Agata di Militello, Messina, Italy

YEAR: 2008

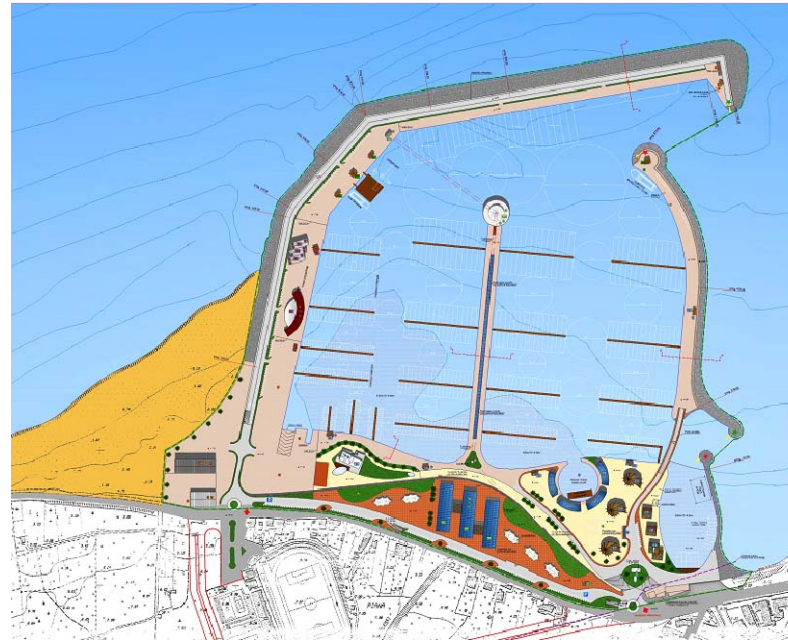
BUDGET: € 98,300,000

PROVIDED SERVICES:

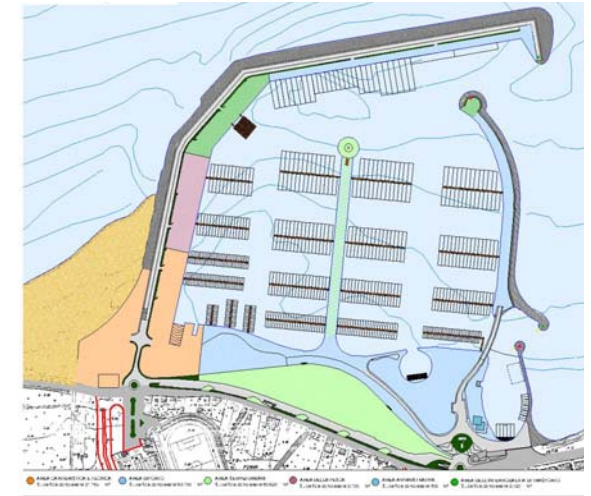
- preliminary, final, construction level design
- environmental impact assessment study
- supervision of construction works
- health and safety duties



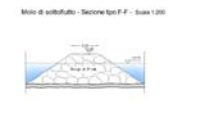
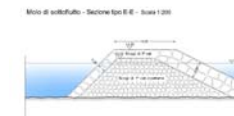
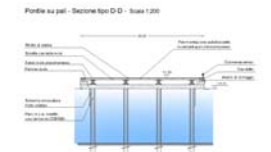
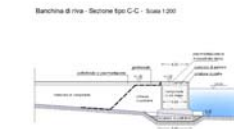
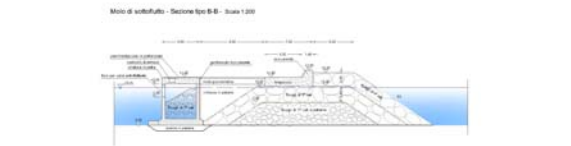
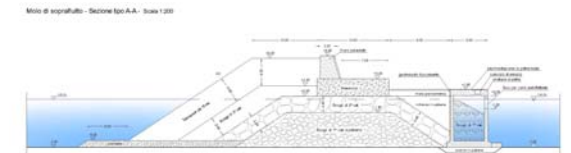
CURRENT LAYOUT



PROJECT LAYOUT



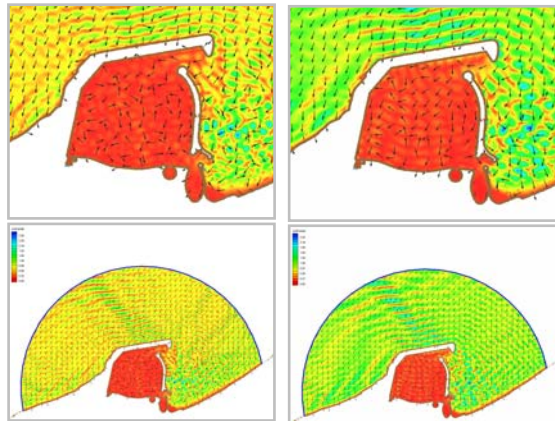
FUNCTIONAL PLAN



TYPICAL CROSS SECTIONS



YACHTING CLUB



COASTAL ENGINEERING STUDIES