

# ASPRA MARINA, BAGHERIA, PALERMO, ITALY

CLIENT: MUNICIPALITY OF BAGHERIA

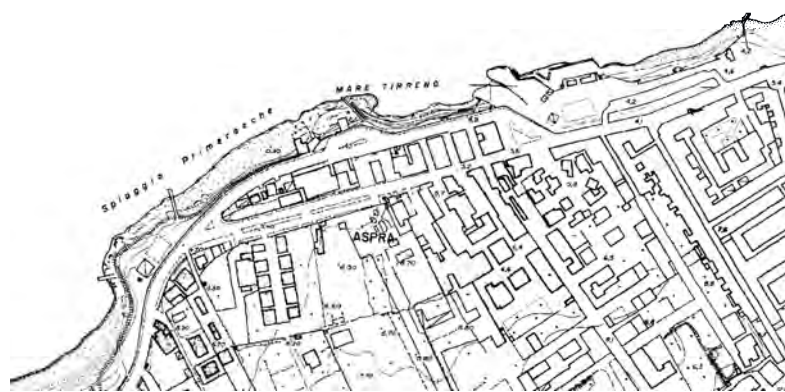
LOCATION: Aspra District, Bagheria, Palermo, Italy

YEAR: 2010

BUDGET: € 38,500,000

PROVIDED OF SERVICES:

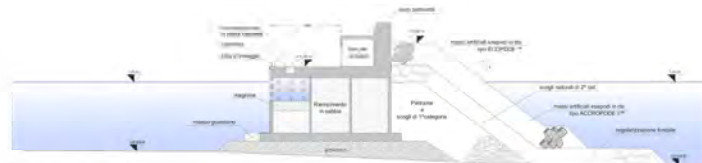
- preliminary level design
- environmental impact assessment study



CURRENT LAYOUT



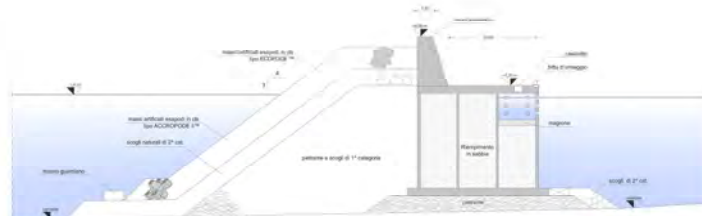
PROJECT LAYOUT



Sezione 1-1' - scala 1:200



Sezione 2-2' - scala 1:200

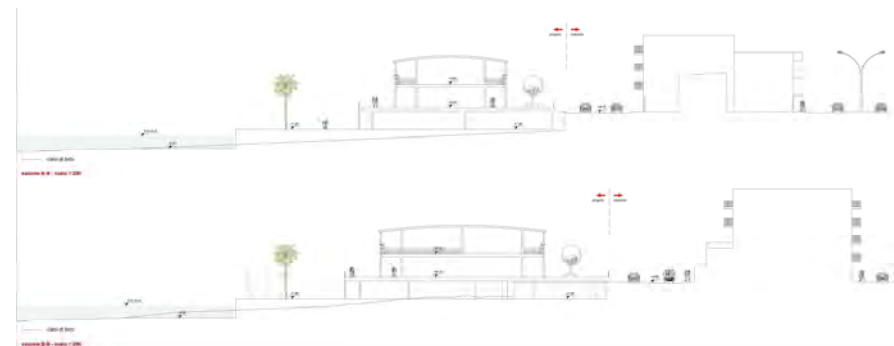


Sezione 3-3' - scala 1:200

TYPICAL CROSS SECTIONS



RENDERING



SECTIONS