

MORPHO-BATHYMETRIC AND STRATIGRAPHIC SURVEY IN TOTALLY MUDDY WATERS OF CALA BASIN OF PORT OF PALERMO, ITALY

COMMITTENTE: AUTORITA' PORTUALE DI PALERMO

LOCATION: Palermo, Italy

YEAR: 2004

BUGDET: € 15.000

PROVIDED SERVICES:

- morpho-batymetric and stratigraphic survey



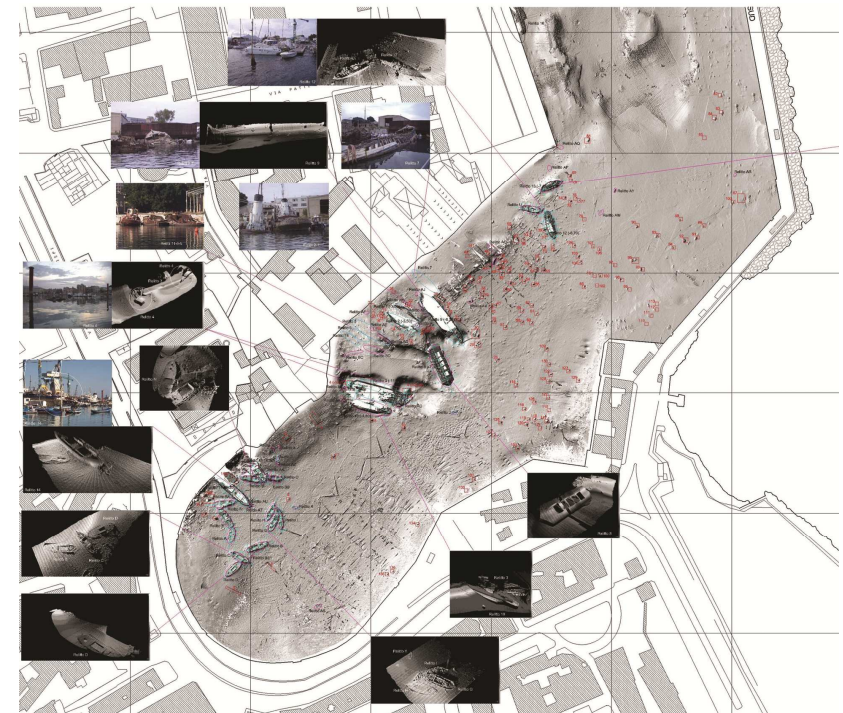
LOCATION VIEWS



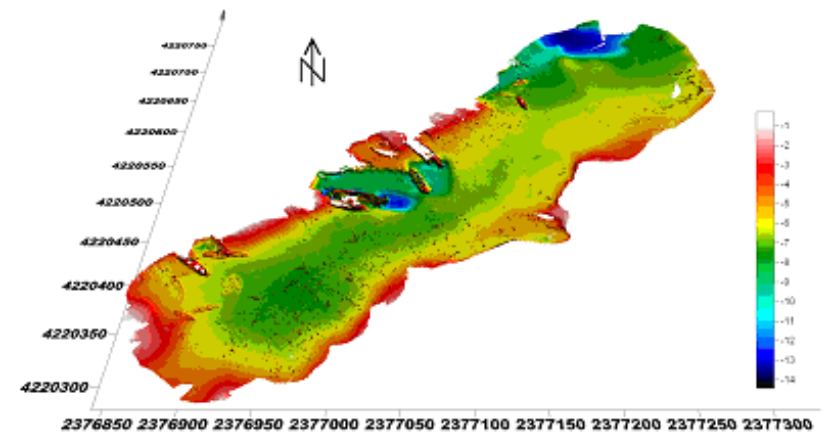
BATHYMETRIC BEPHTS



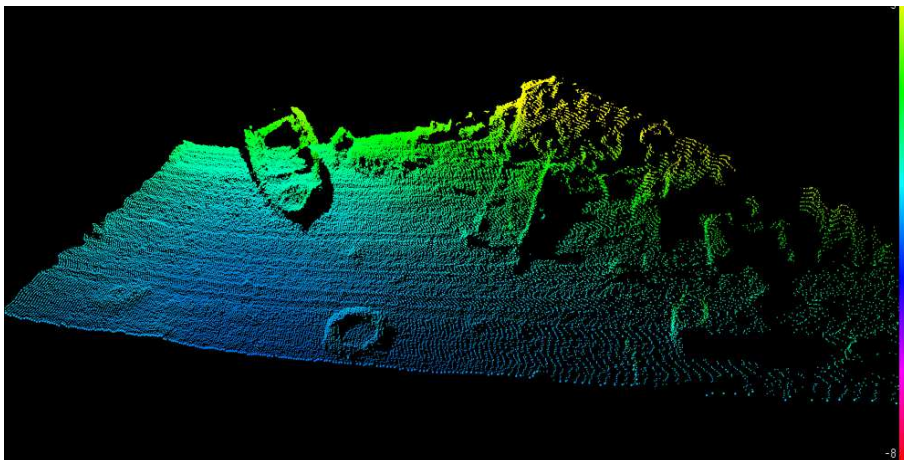
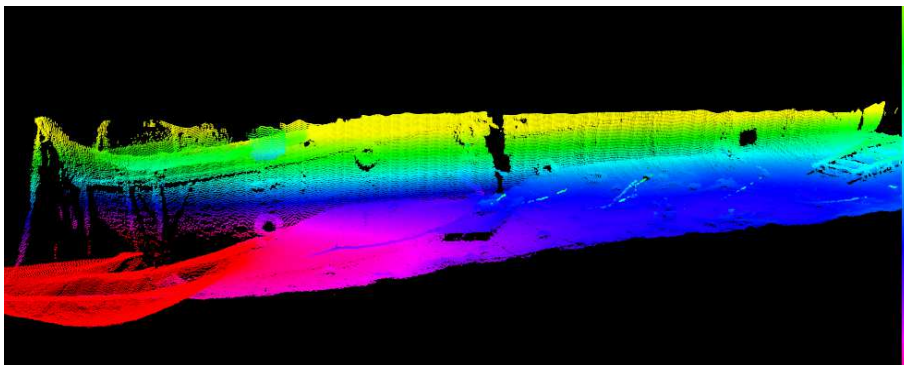
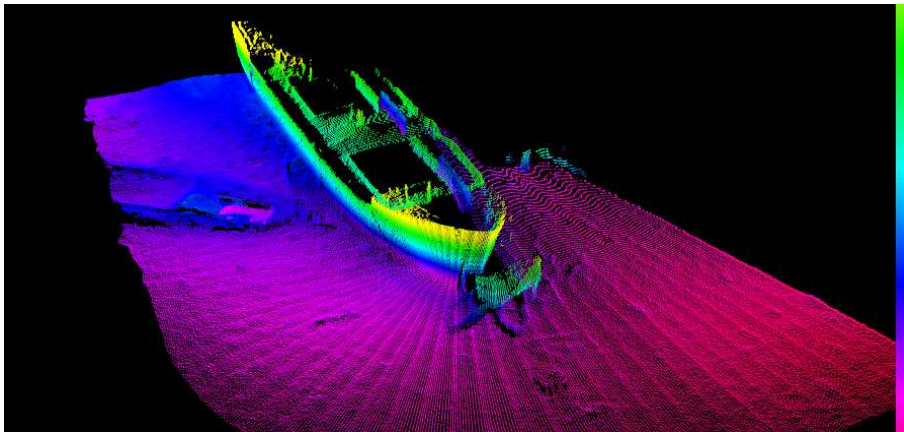
ISOBATH LINES



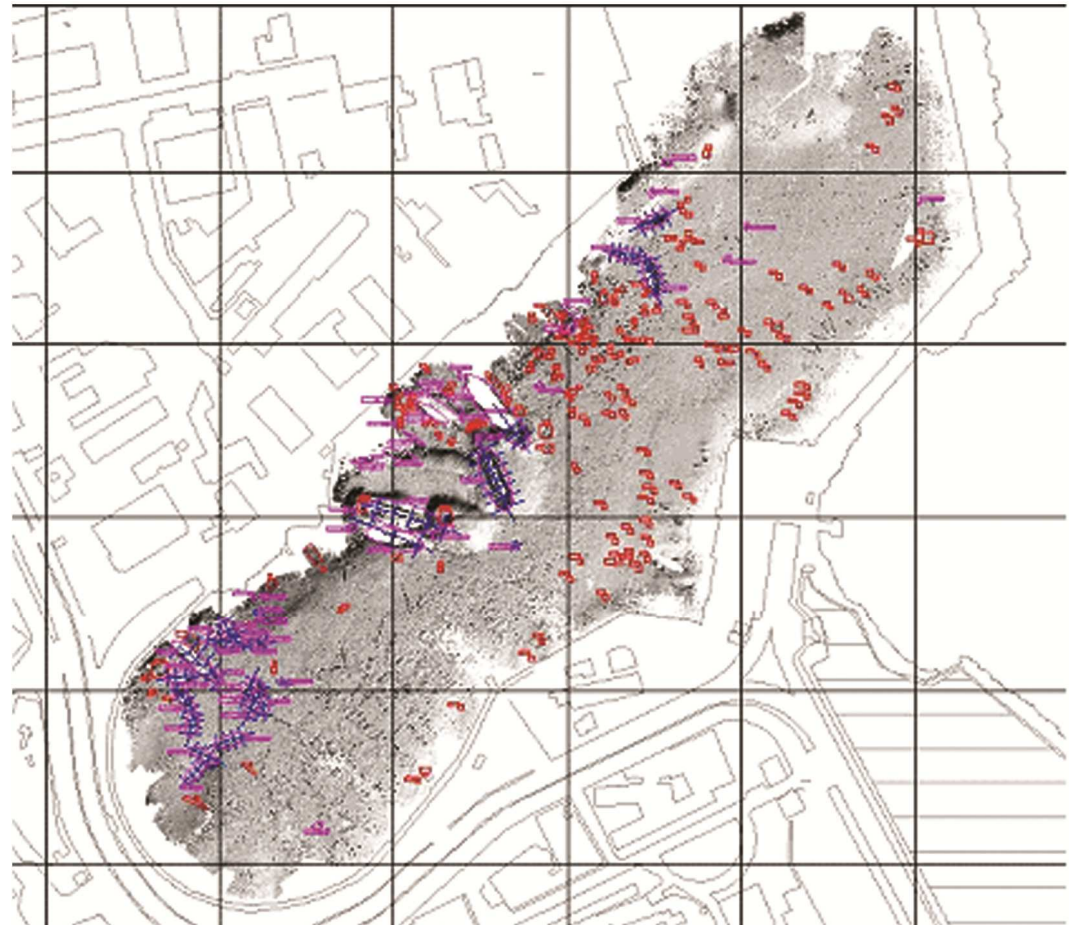
BOTTOM MORPHOLOGY AND IDENTIFICATION OF TARGETS ON THE BOTTOM



3D BOTTOM DIGITALE ELEVATION MODEL



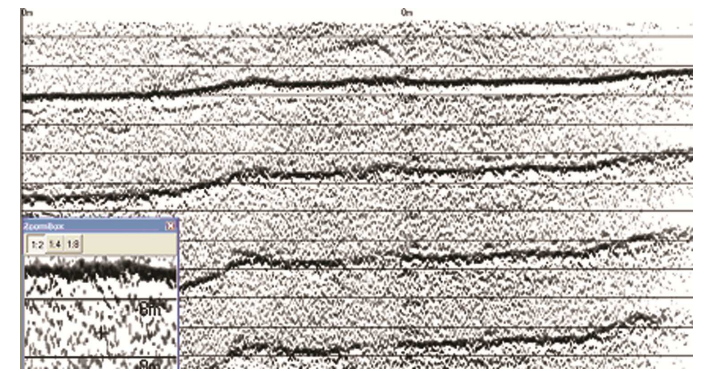
MB PROCESSING FOR THE CORRECT IDENTIFICATION OF WRECK TO REMOVE



MULTIBEAM DATA AND IDENTIFICATION OF TARGETS ON THE BOTTOM



MULTIBEAM IMAGE



SUB BOTTOM PROFILER'S DATA IMAGE