

EXTRAORDINARY MAINTENANCE OF COMMON PARTS OF BUILDING IN PALERMO, ITALY

CLIENT: CONDOMINIO VIA REMO SANDRON 25/27/29/31

LOCATION: Palermo, Italy

YEAR: 2005

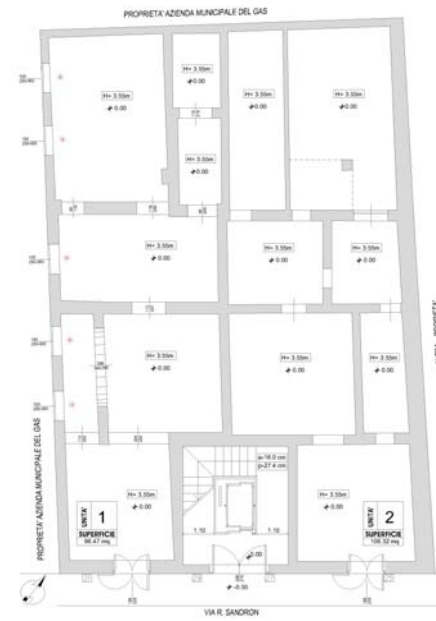
BUDGET: € 300,000

PROVIDED SERVICES:

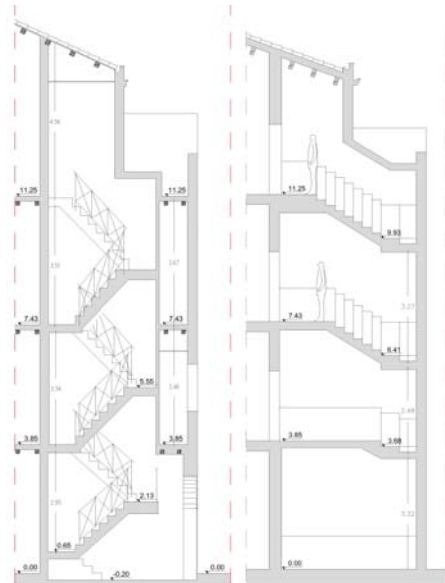
- final and construction level design
- supervision of construction works
- health and safety duties



GROUND FLOOR PLAN: ANTE OPERAM AND POST OPERAM



ELEVATION ON VIA REMO SANDRON: ANTE OPERAM AND POST OPERAM



SECTION OF THE NEW VERTICAL CONNECTION: ANTE OPERAM AND POST OPERAM



ELEVATION ON VIA REMO SANDRON



NEW ROOF



NEW VERTICAL CONNECTION